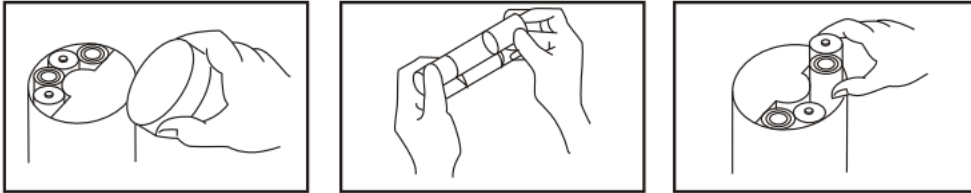


Battery Tube & Battery Case user manual

1. Battery Tube: Using 8 PCS of type C(UM-2) batteries.

1> Installation is as follows:



2> To replace Batteries:

- (1) Loosen the locking screw of the battery compartment cover on the back of the body.
The battery compartment cover comes off
- (2) Insert 8 PCS of type C(UM-2) batteries into the battery case observing correct polarity.
- (3) Insert the battery case with batteries into the battery compartment of the megaphone observing correct polarity.

2. Battery Case: Using 3 PCS of 18650 Rechargeable batteries.

1> Installation is as follows:



18650 Battery Case



2> The battery recharger :

It is not supplied with products. Customers need to purchase their own charger to recharge the battery. (The charger as follows :)



battery recharger not supplied

3> Notes:

When installing the battery, please strictly follow the + and – symbols printed on the battery case.

Do not install it incorrectly or install the battery with + and – polarity reversed, which will cause the product to fail to work. Please see below.

