

Network Video Monitor Software

V1.0.0.0

Operation menu

Chapter 1 Product Overview

1.1 Performance instruction

Network video monitoring software is a centralized management tool for I8 protocol surveillance devices which include NVR, DVR, IPC, MDI, SDI series. It support video preview, playback, electronic map, configuration, and other kinds of function, greatly promoted the users supervision and control.

Each PC can only support one software operation, and it can provide 200 channels front devices access at most. The automatically memory function let the accessed devices number recorded, users have to delete the recorded channels information as the front devices log out.

1.2 System operation environment

Operation system: Microsoft Windows XP or later

CPU: Intel(R) Celeron(R) CPU E3400 @2.6GHZ or later

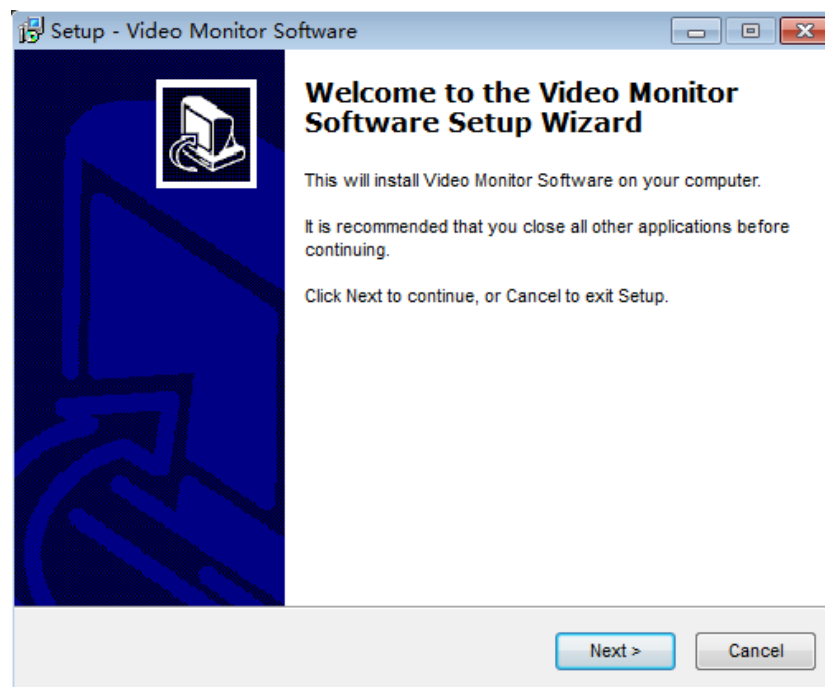
HDD: 2G or later

Network: Gigabit network interface controlle for PC, Gigabit network for interchanger

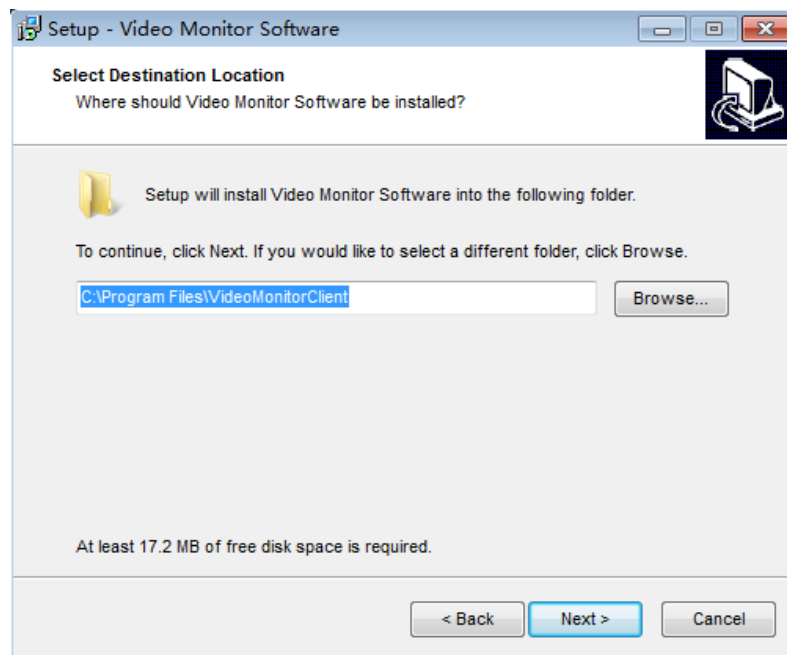
Chapter 2 Software Introduction

Installation instruction

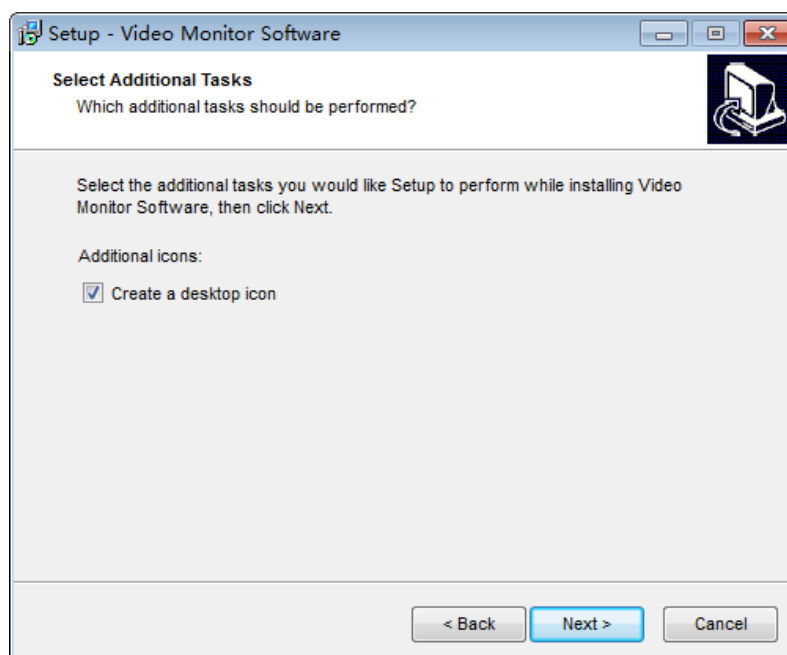
Double click installation program icon to operate the software, and the below interface will pop out:



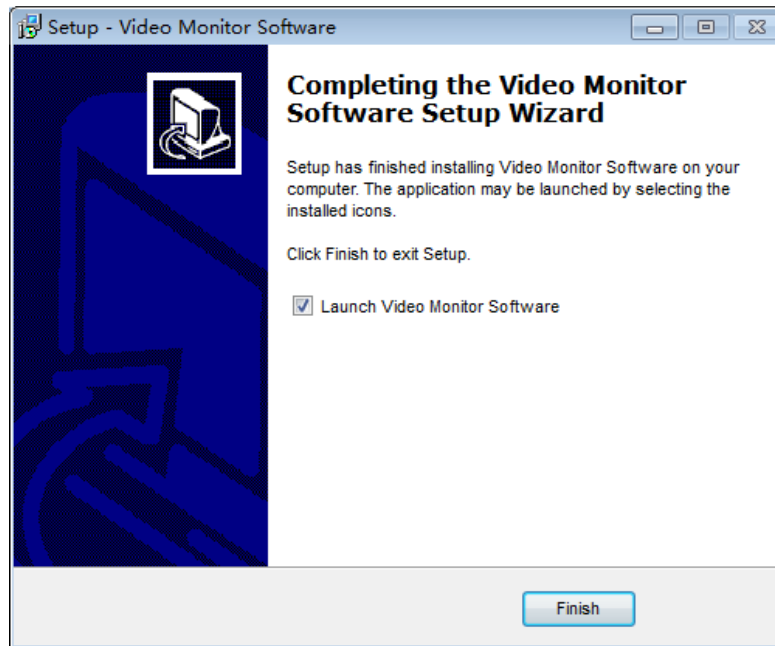
Click **Next** to go to store location selection interface:



Click **Next**, and the below interface will pop out, select **Create a desktop icon**:



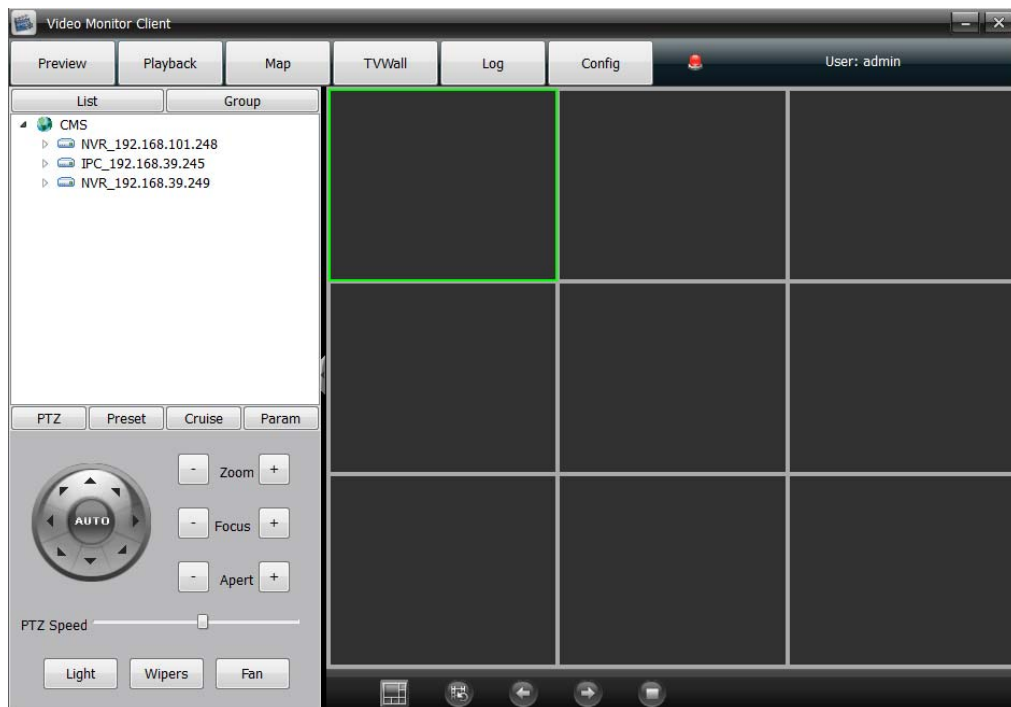
Click **Next**, it will create a desktop icon and meanwhile software installation complete.





After software installation successfully, click the corresponding desktop icon to operate it. The follow interface will pop out, input username and password (Default Username is admin, password is blank) to log in. Any modification for ADMN please go to client-side to handle:





As log in the main interface, it divide into 6 modules include **Preview**, **Playback**, **Map**, **TVwall**, **Log**, **Config**:






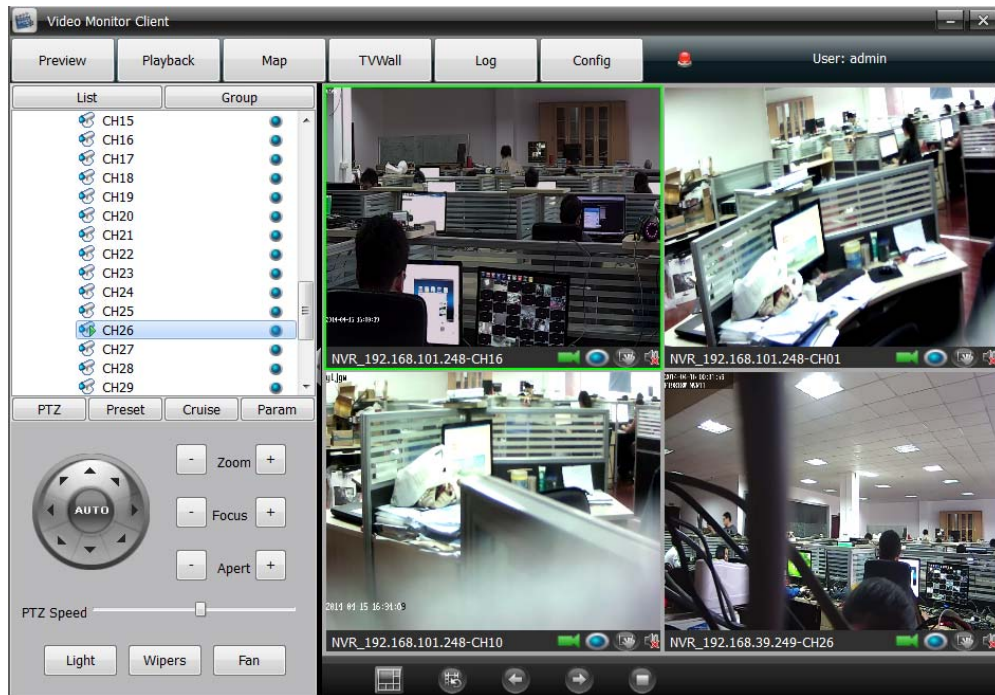
Note: When you have to log out, please click right mouse button at  icon, do not click  icon at top right corner

2.1 Video preview and recording

Double click the selected device address information at the left list, and the below corresponding device channels will come out, double click the selected channel or drag the selected channel to right window to open the video preview.

There is a triangle icon at the channel number left when the corresponding channel device operation. There is a circle icon at the channel number right, blue icon  means video recording not open, red icon  means video recording open. When you selected the right window, the corresponding channel number on left list will turn

 CH03
 CH04
 blue  CH05. As figure below:



2.1.1 Right mouse button for left devices /channels

- Open all preview

Click right mouse button at device to select open all video preview

- Close all preview

Click right mouse button at device to select stop all video preview

- Open all recording

Click right mouse button at device to select start all channel devices video recording

- Close all recording

Click right mouse button at device to select close all channel

devices video recording

- Start/Stop record

Click right mouse button at channel to select start or stop the channel video recording

- Main stream/ Sub stream

Click right mouse button at channel to select main stream or sub stream

2.1.2 Right mouse button for windows

- Stop preview

Click right mouse button to stop the selected window video preview

- Capture

Click right mouse button to do real-time capture for preview interface, and then store the capture file to specified directory

- Start/ Stop record

Click right mouse button to start or stop the the corresponding channel local video recording

- Open/ Close sound

Click right mouse button to set open or close the corresponding channel audio preview(There are only support opening one

channel sound simultaneously)

- Start/ Stop intercom

Click right mouse button to set start or stop the voice intercom

- Stop all preview/ Polling

Click right mouse button to stop all video preview or group polling preview

- Full screen/ Exit full screen

- Defog







There are low defog/ Moderately defog/ Highly defog selectable

- Main stream/Sub stream

Click right mouse button to select the stream sype according to screen display need

2.1.3 Windows toolbar




It will show the device name at the toolbar left, gray icon  means front device does not do video recording (Green icon  means front device is doing video recording), blue icon  means local channel does not do video recording (red icon  means local channel is doing video recording),  means capture,  means open or close the sound.

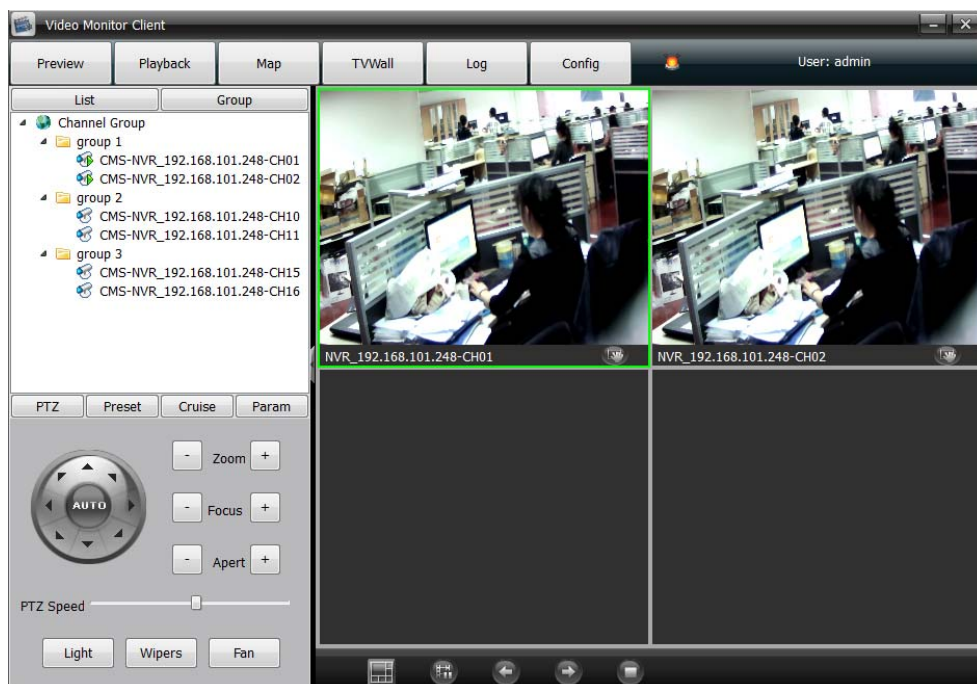
2.1.4 Below toolbar at the video preview windows





All the icon at the toolbar respectively is Set split-screen, Start/Stop polling, Last group, Next group, Stop all preview/ Polling.

2.1.5 Device video group polling

Add two or more then two channels video to compose a group(More details for operation steps please refer to **Config** module introduction), Click  icon to start group video polling. As figure below:



Click the  icon once again to stop group video polling, Click  icon to close group video polling.

2.1.6 PTZ

2.1.6.1 PTZ control

Click **PTZ** , it control the camera lens 8 directions respectively is Up, Down, Left, Right, Up left, Down left, Up right, Down right, Zoom +/-, Focus+/-, Apert +/-, PTZ speed, Light, Wipers, Fan. As figure below:



2.1.6.2 Preset

Click **Preset** to enter into preset setting interface:

No.	Preset Name
1	
2	
3	
4	
5	
6	
7	
8	
9	

Config Clear Move to

Turn the camera lens to appointed location, and select the serial number, click “ Config” and there is a “Set Preset Name” interface pop out, edit preset name and click **OK**.

If you want to modify the preset location, turn the camera lens to appointed location directly and click “ Config”to change and save it. Configurable preset numbers depend on front device supporting.

Click **Clear** to delete the setted preset

Select the serial number and click **Move to**, the camera will go to the corresponding setted location directly.

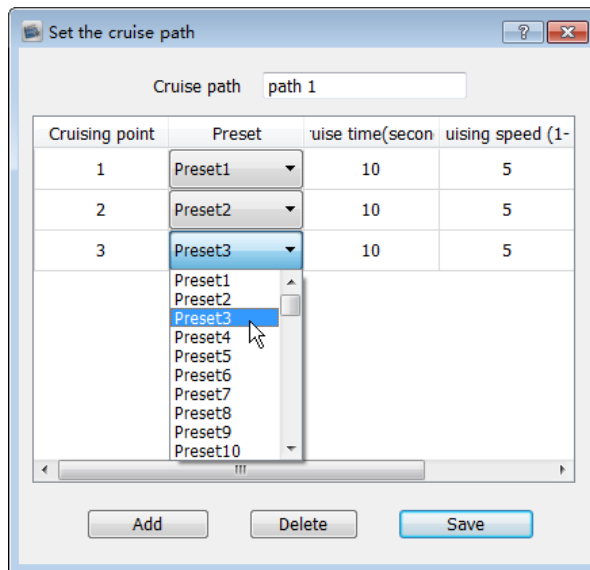
2.1.6.3 Cruise

Click **Cruise** to enter into preset setting interface:

No.	Cruise path name
1	
2	
3	
4	
5	
6	
7	
8	
9	

Config Call Stop

Select a serial number and click **Config**, the following interface will pop out:



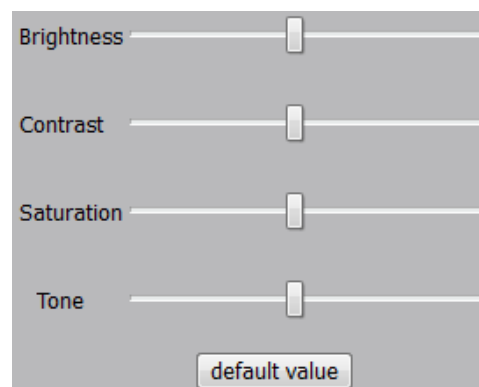
Input the cruise name, click **Add**, and select the specified preset, then set the cruising time and speed. Repeat above operation to add the second and third cruising point, configurable cruise point numbers depend on front device supporting.

Select the cruising point number and click **Delete** to delete the corresponding cruising point,

After complete the setting, click **Save**. Click **Call** to start cruising, and click **Stop** to close the cruising.

2.1.6.4 Param

Click **Param** to enter into parameters setting interface:



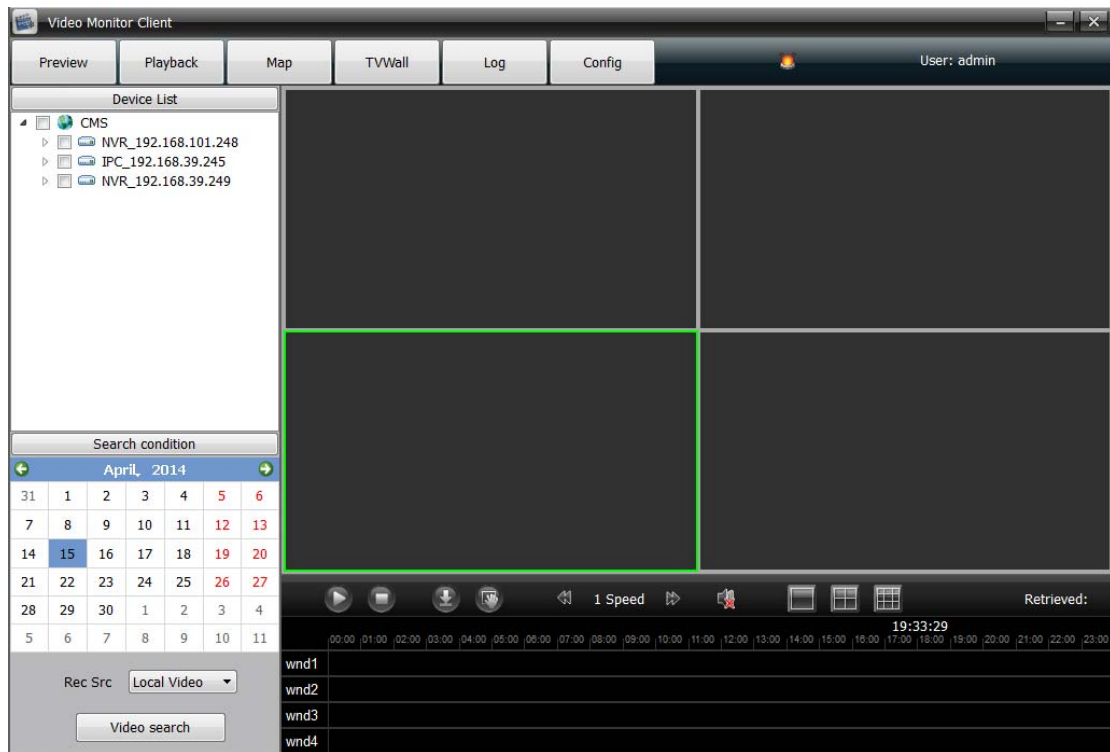
Set the right window selected channel's brightness, contrast, saturation and tone, click default value to make the parameters restore default. It only support brightness and contrast setting for current I8 protocol.

2.1.7 Preview interface electronic zoom




As select the channel preview window, it support electrical smooth zoom in by mouse middle button wheel operation.

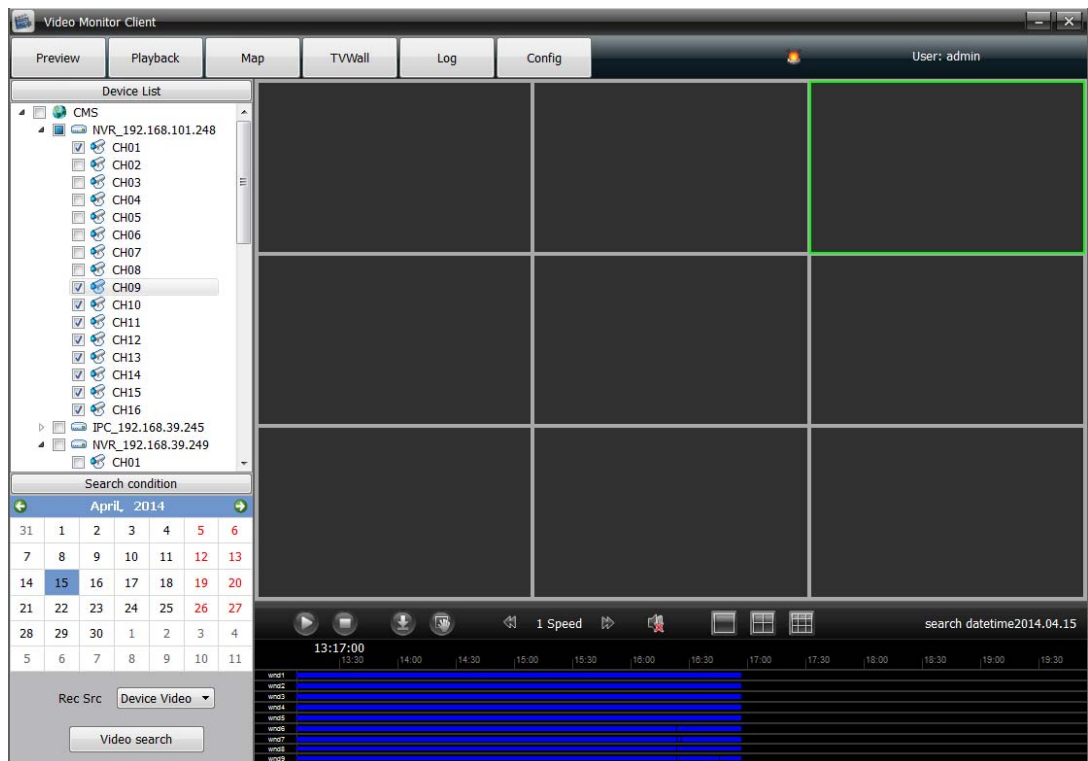
2.2 Video playback

Click **Playback** to go to video playback module, as figure below:





2.2.1 Local video search

Click  icon in front of the device information while all channels following this device will be selected, click  icon in front of  icon to show the scope selection drop-down list, and determine to search the needed channels video(Each device only support 9channels video playback at the same time, different devices record video can not playback at the same time). Set the date, select record scope(**Local video**) and click **video search** to view the record video. As figure below:




2.2.2 video playback

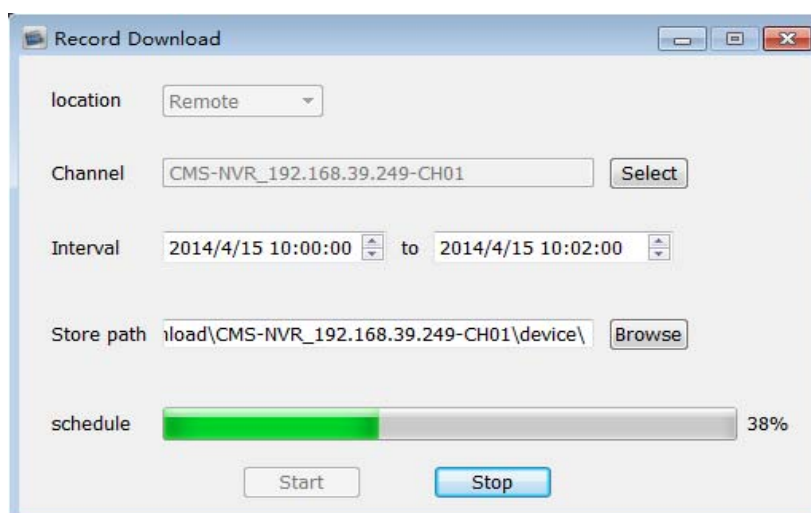
Click  to play, click  to stop, double-click on the video progress bar can pinpoint playback. As figure below:



In the playback interface, double-click a playing window, or click right on the playing window to select **Full screen**, it will get full-screen display.

2.2.3 Record download






Click  record download, there a record download setting page will pop out. As figure below:



Select the video location(Remote/ Local), download channel, time interval and video store path, click start or stop to download, the file will save in the specified path.

Attention: It is best to use VLC media player to play the downloaded file.

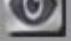
2.2.4 Toolbars

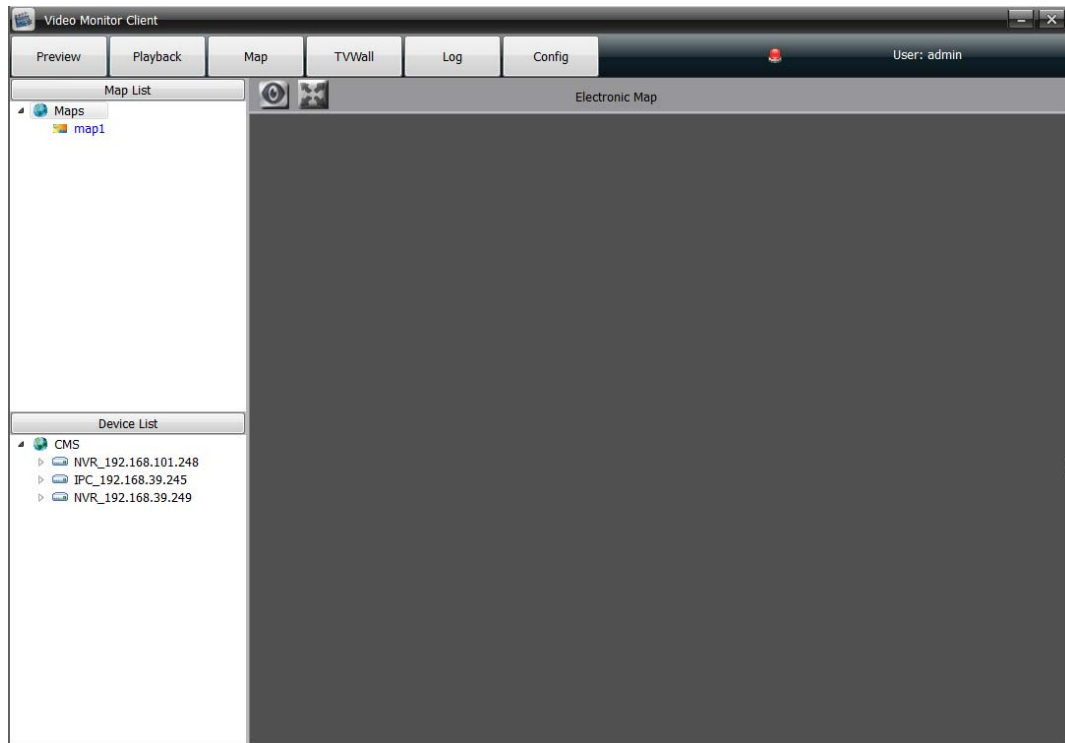
 capture,  1 Speed  control the speed of playback;  open and close the voice(It only support 1 channel voice playing every time),  1、4、9 split screen switch.



2.2.5 Playback image electronic amplification

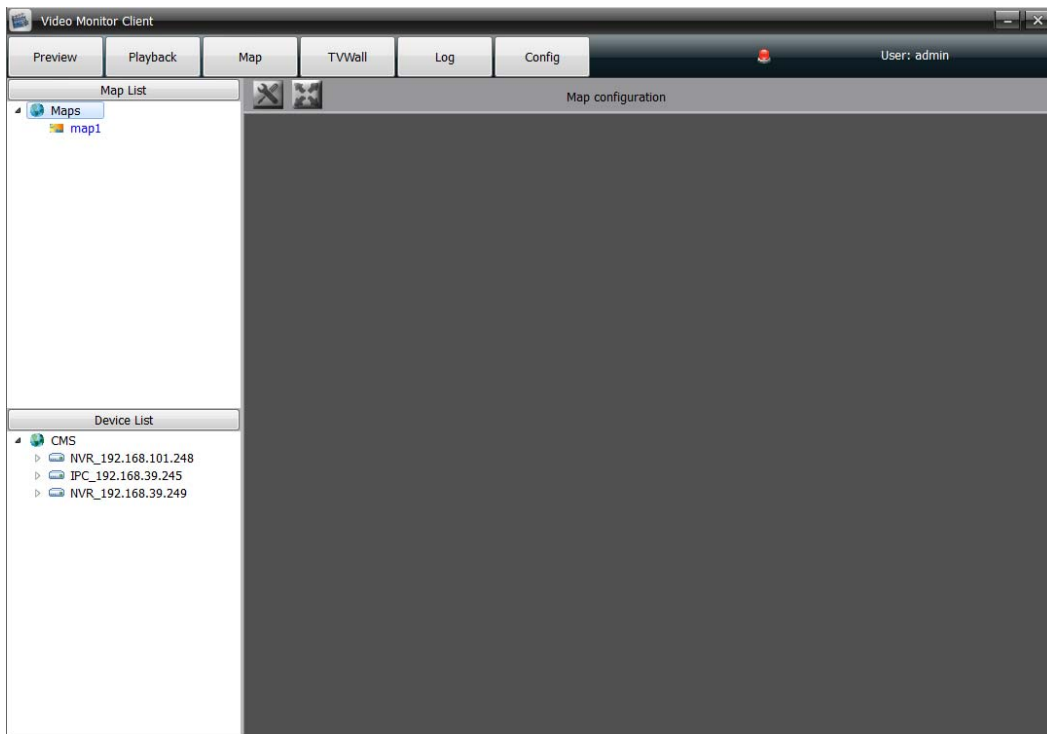
During video playback, select one window and scroll with the mouse, the video image will Zoom in several times.

2.3 Map


Click **Map** to enter into map function module,  means the electronic map are opening. As figure below:

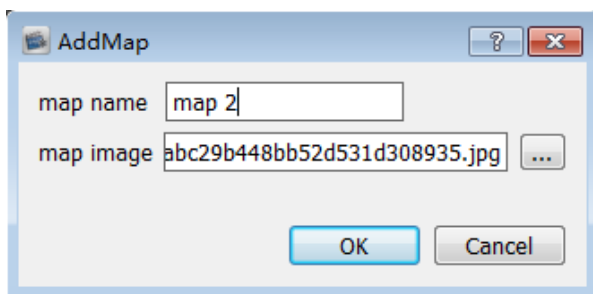


Click  and it will change to , it means the electronic map are in configuration. As figure below:



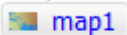
2.3.1 Add map

Click right key on  and select **New Map**, the follow interface will pop out, edit the map name and add a map image, click OK, the map added successfully.





When the electronic map display, the corresponding name will turn

blue  map 2 .



2.3.1.1 Right-click on map name


- Delete map

Delete the current map

- Add child map

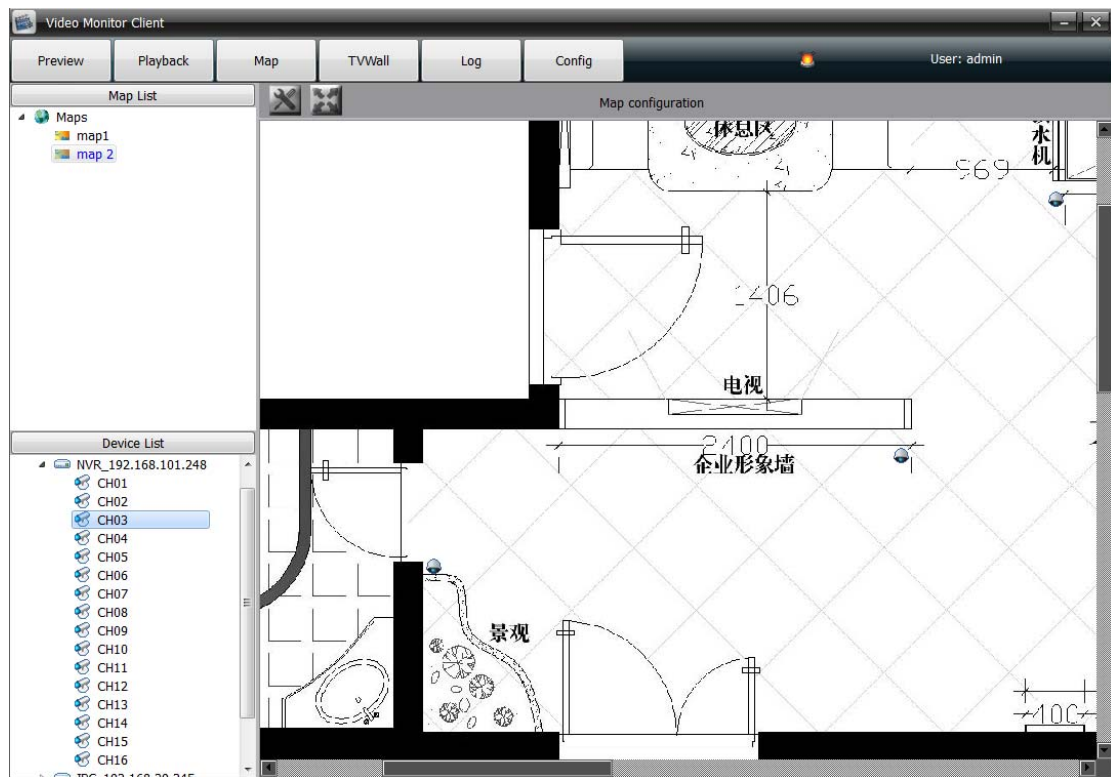
Add a sub map for the current map, there are only 2 levels for each main map, so it can not add a new map under the sub map.

 icon will appear on the main map, double click to open the sub map(It is only available for the map situation is )

Click  icon on sub-map to return to the main map.

2.3.1.2 Right-click on / icon



Select the channel in the device list and drag on the map to successful set up defence. As figure below:



- remove channel

Delete the channel from the map

- channel icon

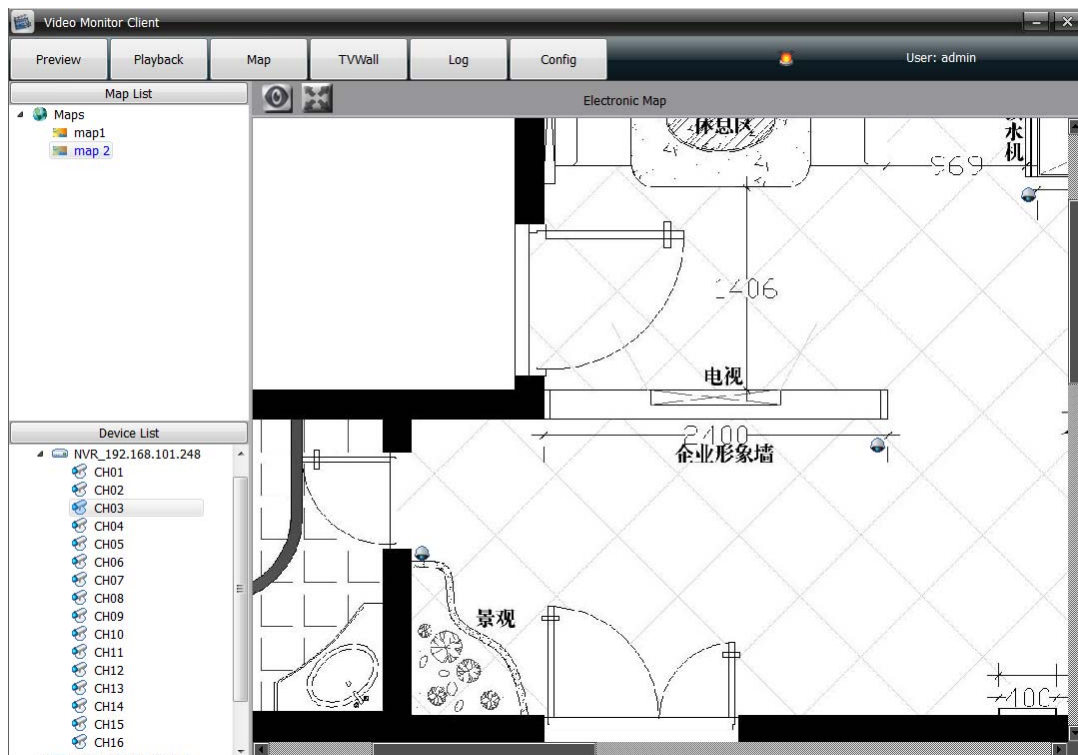
There are two icons for selectable: monitor icon  and gun icon 

- Motion detection: Set the motion detection alarm linkage, when the alarm is triggered, it will popping preview window automatically in the electronic map.
- Loss of signal: Set the signal loss alarm linkage, when the alarm is triggered, it will popping preview window automatically in the electronic map.

- Shelter alarm: Set the video shelter alarm linkage, when the alarm is triggered, it will popping preview window automatically in the electronic map.
- Alarm input: Set the alarm output linkage, when the alarm is triggered, it will popping preview window automatically in the electronic map. (As aimed at NVR series, the front part of alarm input signal is NVR local alarm input, the behind part signal front-end IPC alarm input)

2.3.2 Electronic map

Enter into the module of electronic map( Icon status):



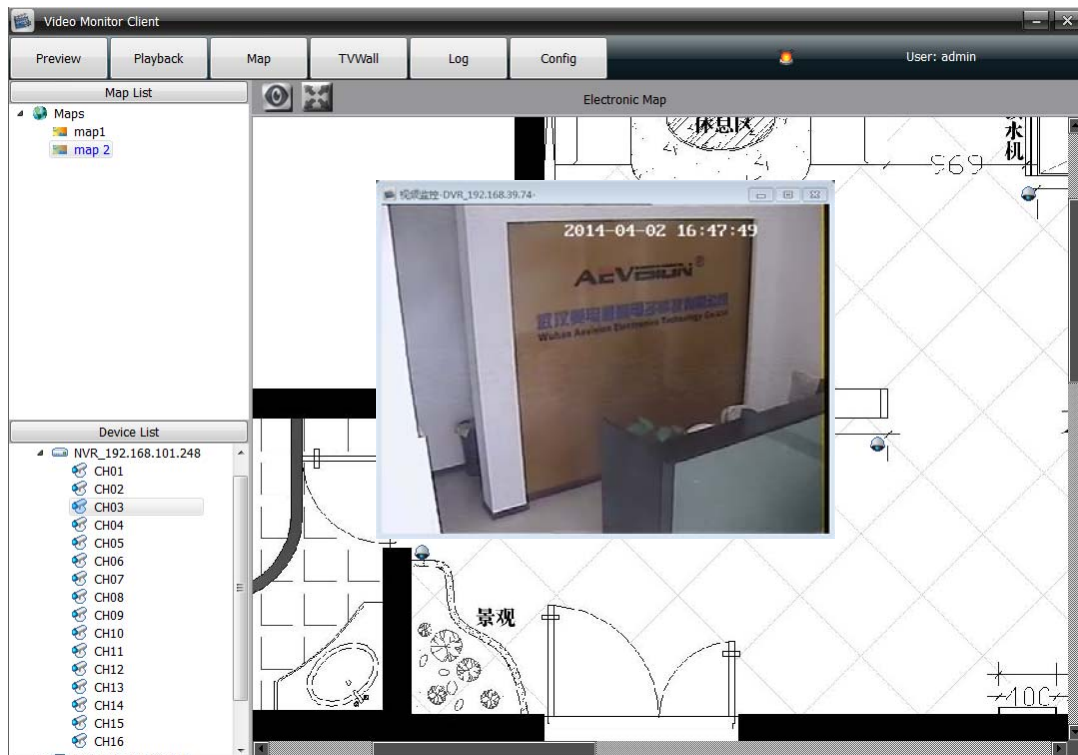
2.3.2.1 Right-click on / icon

- Channel preview

- Channel playback (Operation details please refer to the **2.2 Video playback**)

2.3.2.2 alarm linkage preview



After the front device alarm toggle opened, and linked to this network video monitoring software, the linkage channel will pop out the preview window as alarm detected , the channel icon in the map and red light on the screen right corner will flashing simultaneously.



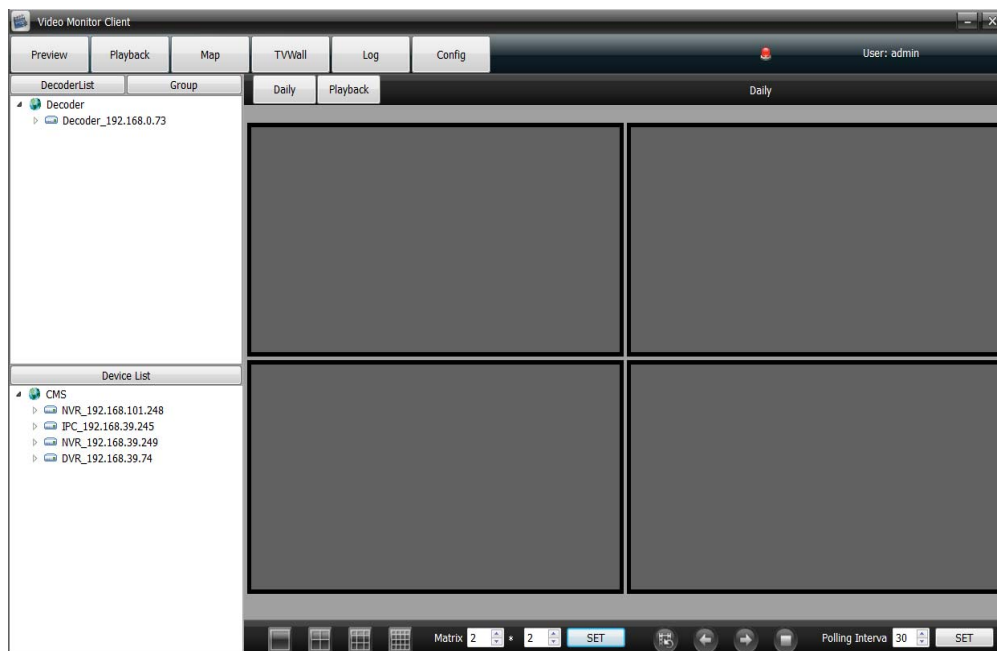
The software can handle multiple channels alarm linkage at the same time, and support different map linkage alarm preview windows which pop out at the same time.

2.3.3 Map widening , narrowing and full screen

- Map support the mouse scroll to widening and narrowing

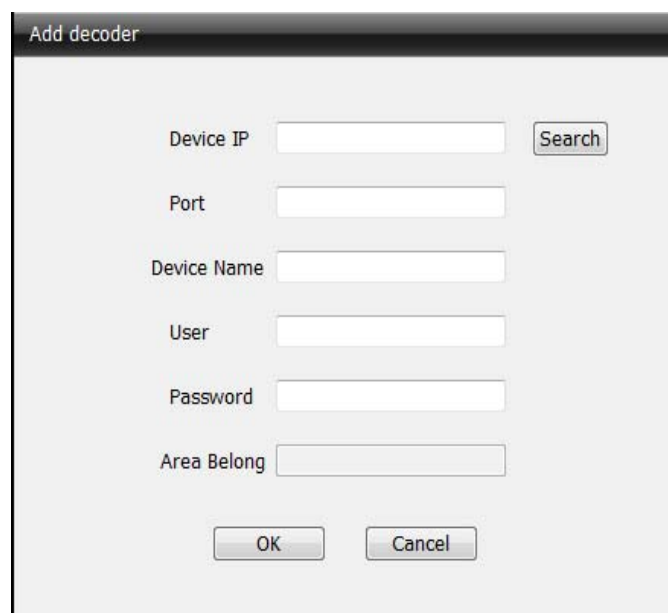
-  icon used to widen screen map,  icon used to close the full screen map

2.4 TV -Wall



Decoder list was used to add decoder and show the decoder added.

Right-click menu” decoder”, select **Add decoder** , the follow interface will pop out, As figure below:



Add decoder

Device IP

Port

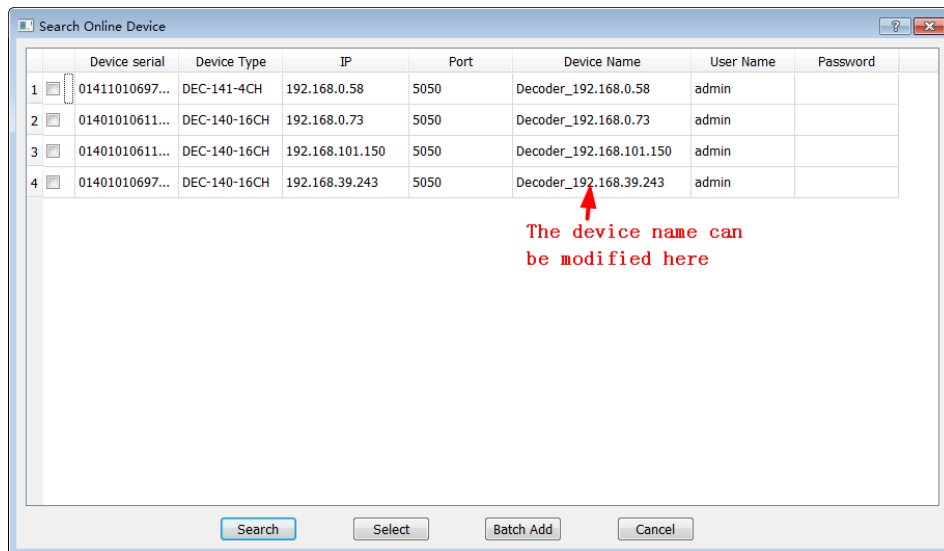
Device Name

User

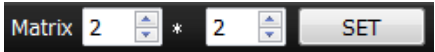
Password

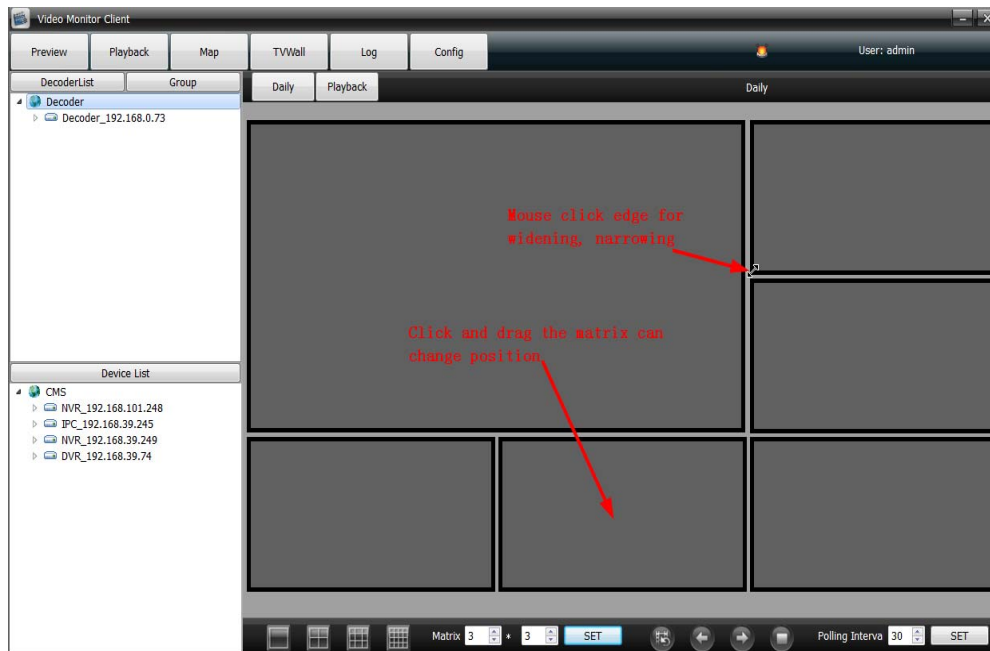
Area Belong

Input the device IP, port, device name of decoder and then click OK. If there are many decoders, click search and open the search interface. As figure below:



Check multiple decoder devices , click **Bulk add**. Or check and add the decoder device one by one.

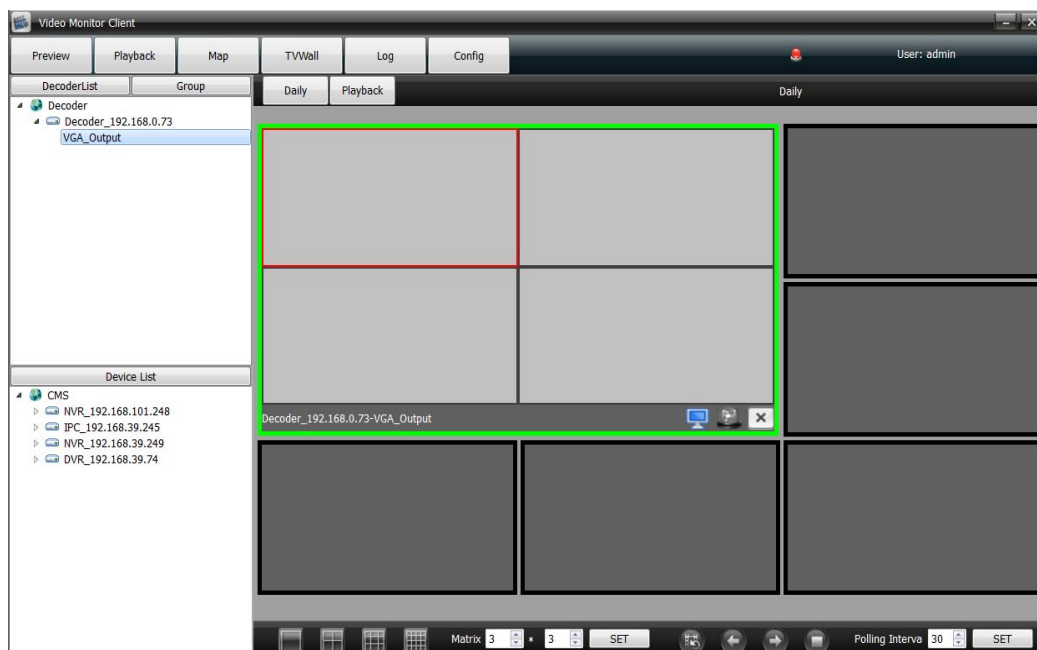
After add the decoder, according to the TV-wall to set matrix display through the toolbar on the screen below , input the numbers and click **SET**. As figure below:



Matrix right-click menu: Add new matrix/delete matrix

2.4.1 TV-wall daily

TV-wall daily include decoder preview and decoder rotation. Drag the decoder to the matrix, there will appear relevant information about decoder on the screen. As figure below:





icon shows the condition of decoder:



means the decoder is used to preview only



means the decoder is used to rotation only



shows the decoder status of set/remove defence



means the decoder removed the defence and can not support

video display on the TV wall



means the decoder set the defence and can support video

display on the TV wall



means it is used to delete the channel of decoder : select the split


screen, and click

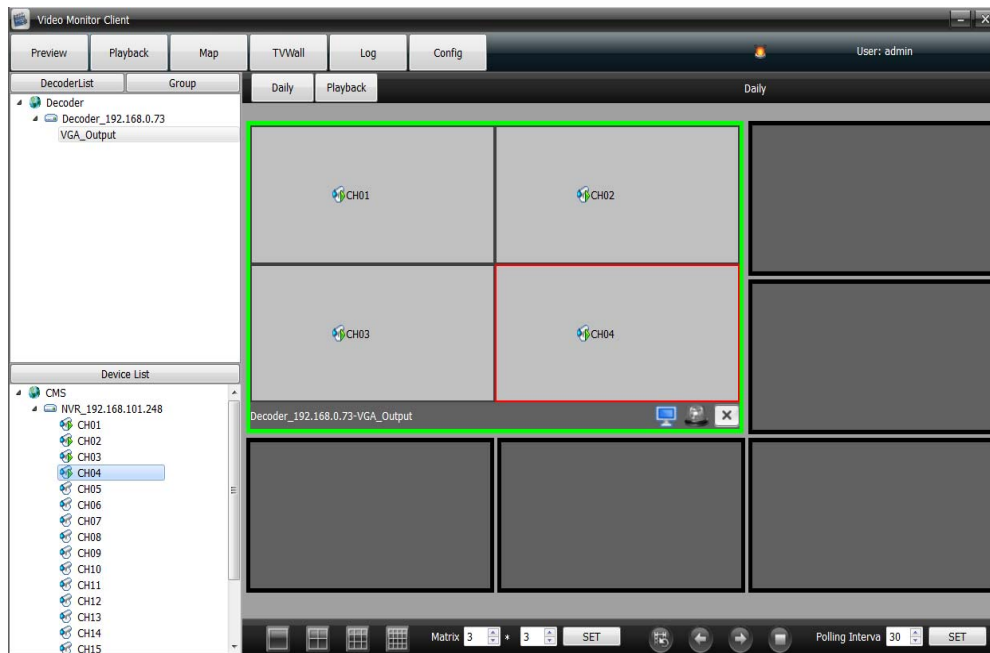


icon is used to amend the split screen of decoder


Right click: Delete matrix output/ widening display

2.4.1.1 Decoder preview

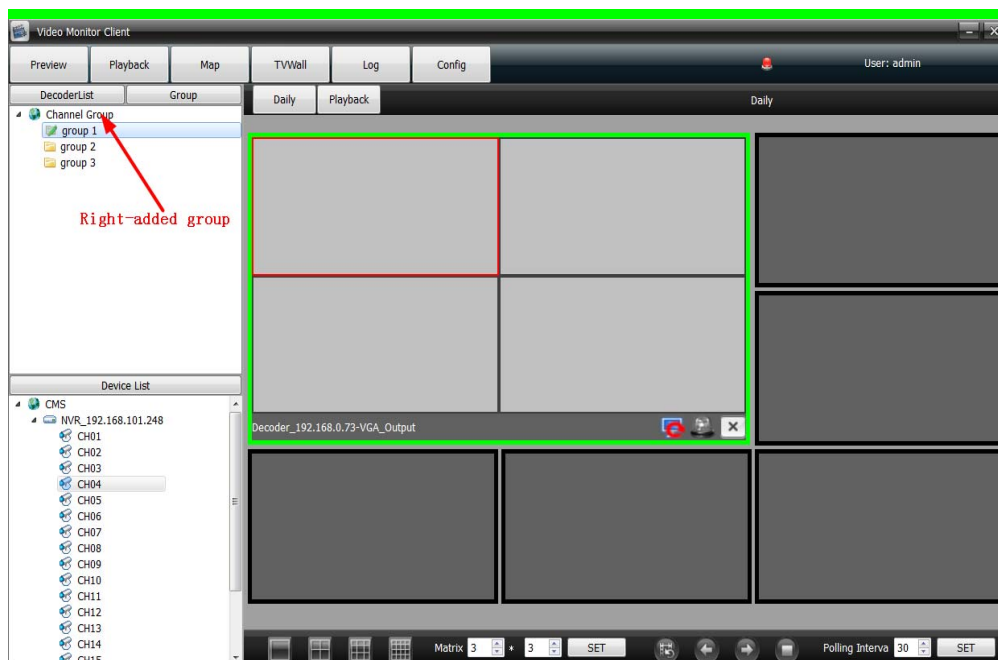
Transfer the wall into preview status , drag the device channel into decoder split screen directly. As figure below:




2.4.1.2 Decoder rotation

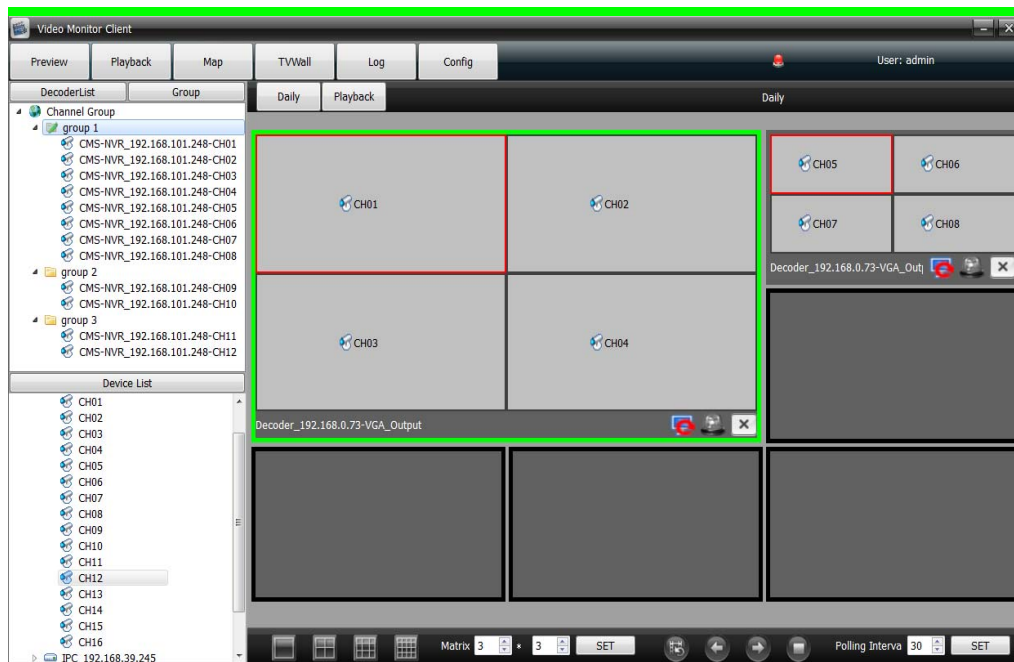
Transfer the wall into rotation status , it indicate the wall is in rotation condition.

User add channels into group. As figure below:



After added group successfully, double-click a group icon into configuration state  group 1. Then drag the channel to the group , the

dragged channels will be recorded in the decoder. As figure below:



While all group are setting done, click  to open rotation.



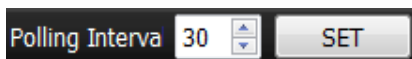
switch to last group to monitoring



switch to next group to monitoring



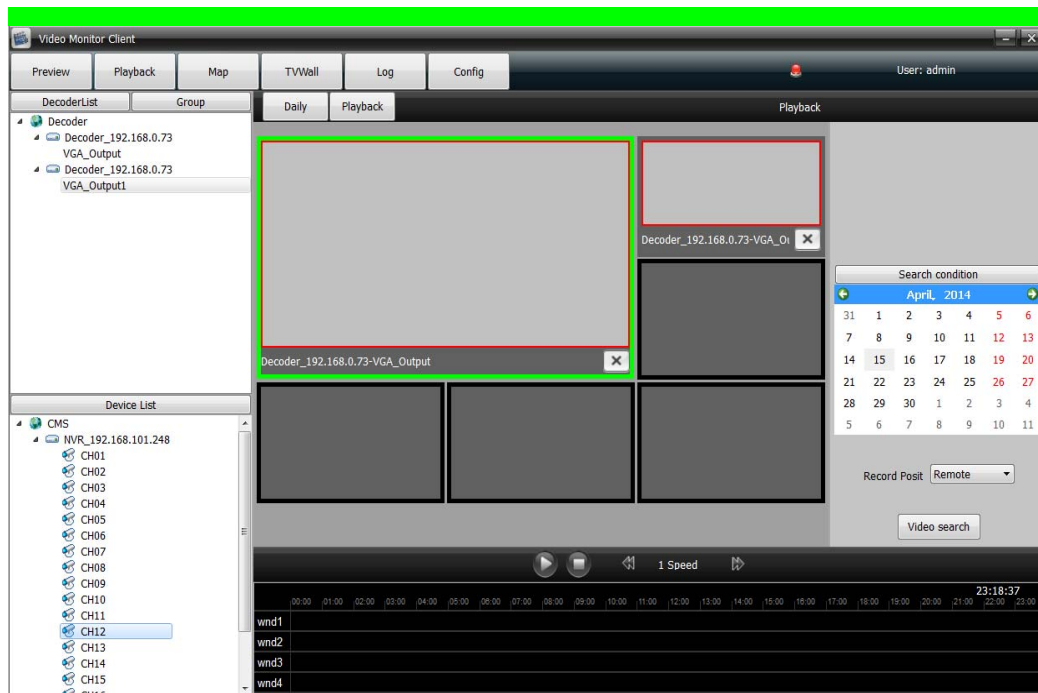
close the rotation



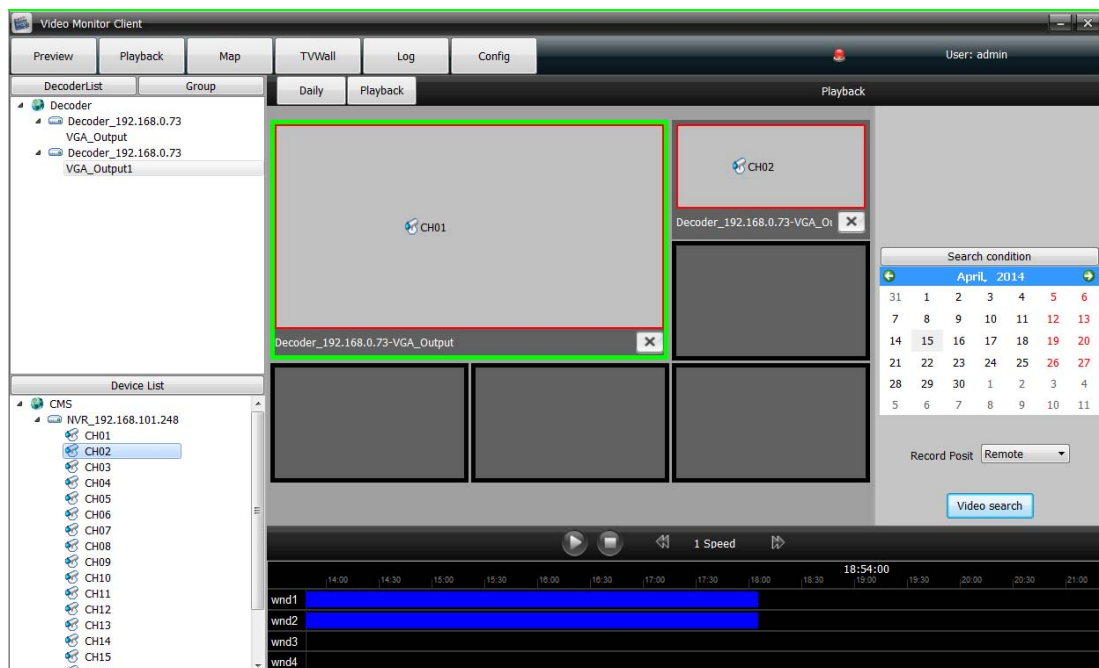
it is used to set the time of rotation.

2.4.2 TV-wall playback

Click playback to check the record video. As figure below:



One decoder only support one channel record video playback at every time,, each device only support 9channels video playback at the same time, different devices record video can not playback at the same time. Drag channels to the decoder then select the time and position of video, finally click the button of video search. As figure below:

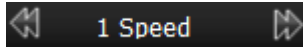




click to play record video, or precisely click the record video blue bar directly

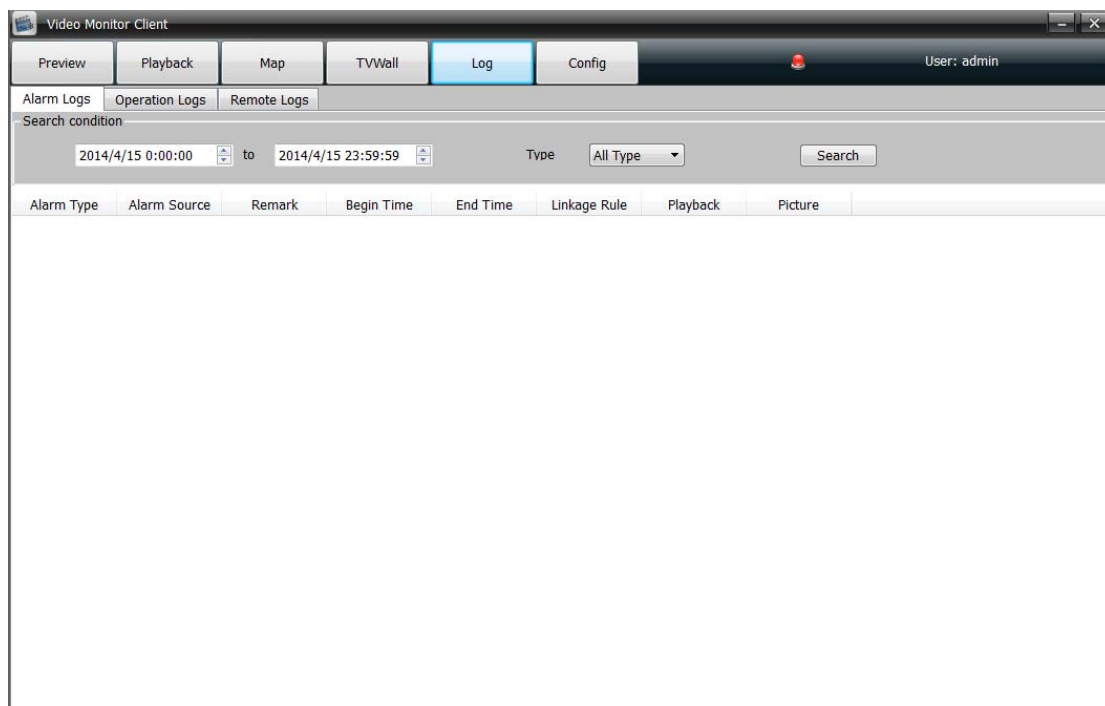


close the playback



control the playback speed.

2.5 Log



2.5.1 Alarm logs

Alarm logs: It can be search out as the front device marked alarm signal upload center,

it can be search out if check the alarm of upload center in device side which respond to the alarm linkage rule in client-side. It will show the relevant information of rules in linkage action and playback. As the picture below:

Video Monitor Client

Preview

Playback

Map

TVWall

Log

Config

User: admin

Alarm Logs

Operation Logs

Remote Logs

Search condition

2014/4/15 0:00:00


to

2014/4/15 23:59:59

Type

All Type

Search



	Alarm Type	Alarm Source	Remark	Begin Time	End Time	Linkage Rule	Playback	Picture
1	Motion	CMS-IPC_192...		2014-04-15 18:25:41				
2	Motion	CMS-IPC_192...		2014-04-15 18:25:16	2014-04-15 18:25:39			
3	AlarmInput	CMS-NVR_19...		2014-04-15 18:24:42	2014-04-15 18:25:36	Pop Image		
4	Motion	CMS-IPC_192...		2014-04-15 18:24:30	2014-04-15 18:25:13			
5	Motion	CMS-IPC_192...		2014-04-15 18:23:04	2014-04-15 18:23:36			
6	VideoCover	CMS-IPC_192...		2014-04-15 18:22:26	2014-04-15 18:22:33			
7	Motion	CMS-IPC_192...		2014-04-15 18:22:20	2014-04-15 18:22:43			
8	Motion	CMS-IPC_192...		2014-04-15 18:20:04				
9	Motion	CMS-IPC_192...		2014-04-15 18:19:36	2014-04-15 18:20:01			
10	Motion	CMS-IPC_192...		2014-04-15 18:19:00	2014-04-15 18:19:29			
11	Motion	CMS-IPC_192...		2014-04-15 18:17:00	2014-04-15 18:18:50			
12	Motion	CMS-IPC_192...		2014-04-15 18:16:06	2014-04-15 18:16:54			
13	Motion	CMS-IPC_192...		2014-04-15 18:15:14	2014-04-15 18:15:30			
14	Motion	CMS-IPC_192...		2014-04-15 18:14:34	2014-04-15 18:14:57			
15	Motion	CMS-IPC_192...		2014-04-15 18:14:09	2014-04-15 18:14:25			
16	Motion	CMS-IPC_192...		2014-04-15 18:13:44	2014-04-15 18:14:00			

The type of alarm can be divided into alarm input, motion detection, video shelter, video lost.

Alarm source come from the device channels.

Begin time and end time is the time of alarm triggered and the time of alarm stop.

Linkage action shows the relevant linkage rule information, such as there will show **pop image** chars if set video action linkage.

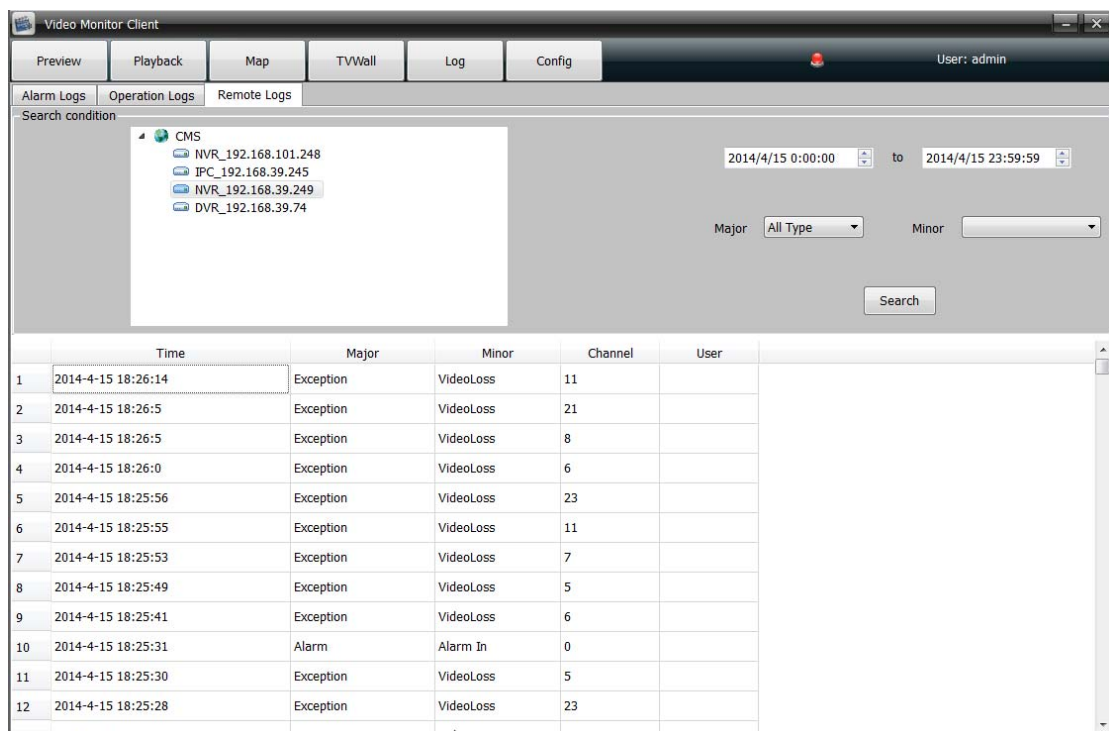
In the playback,  icon indicate that there a record video, click the  icon to play.

2.5.2 Operation logs

Operation logs : All users operations will be recorded, and the operation type include: All type, log in/out, add/ delete devices, setup/ cancel alarm, open/ close record, remote configuration, set alarm linkage.

2.5.3 Remote logs

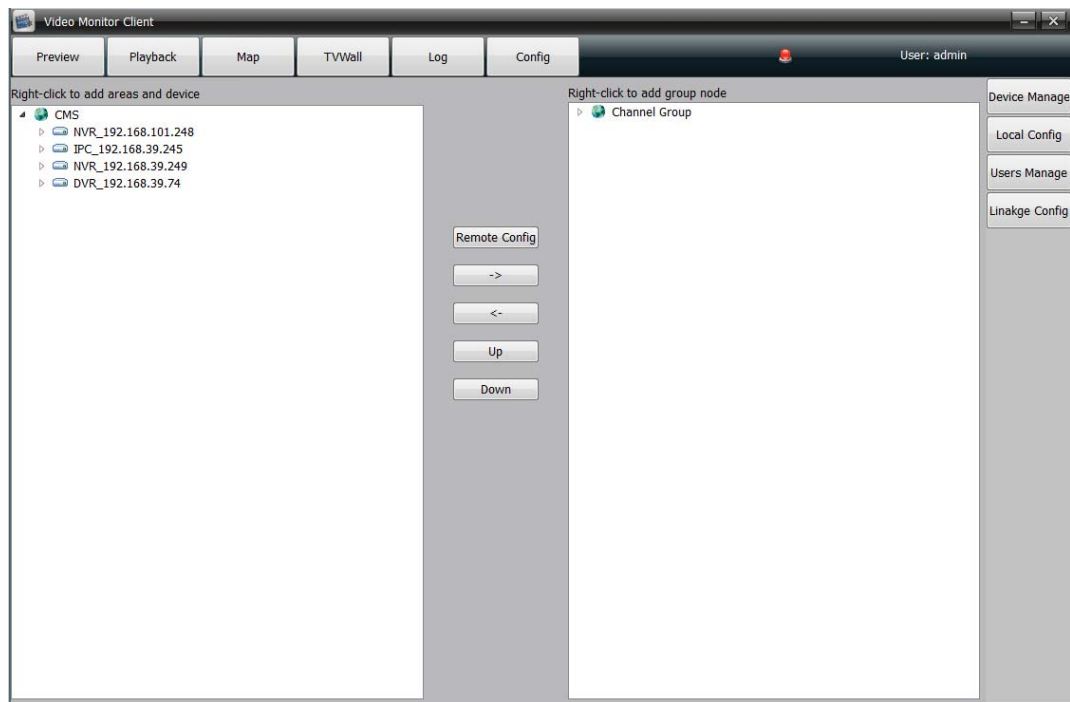
Remote log is to search the alarm information saved in the front-end device. Select the front-end device, set date and type then click **Search**, all alarm information of the preset time period will appear in the blank area. As figure below:



2.6 configuration

2.6.1 Device manage

Click and enter into the device manage configuration page. As figure below:



2.6.1.1 Right-key on left area CMS icon


- Add area

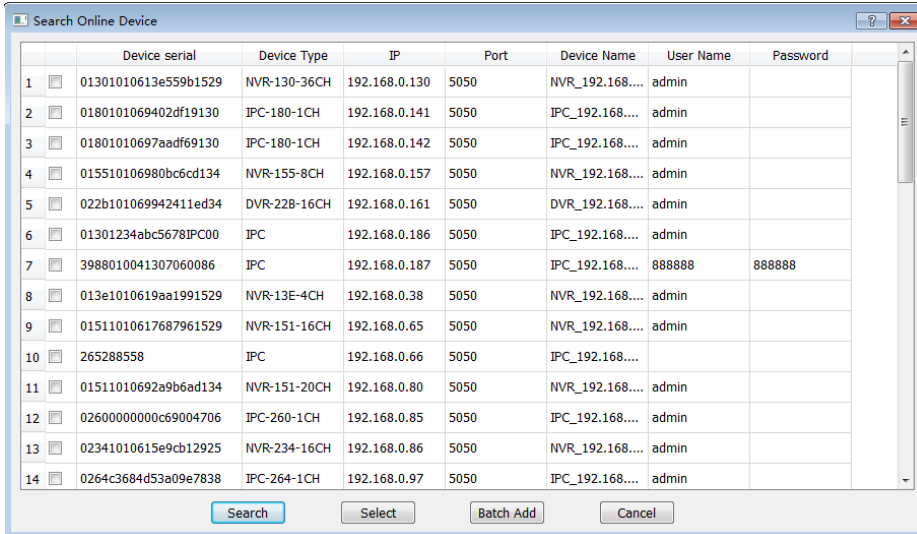
Right click to add a new sub-area, input the area name and save it.

- Add device

Right click to select **Add device**, and the follow interface will pop up:

Input the information and click OK to add successfully, or click

 , the follow interface will pop up:



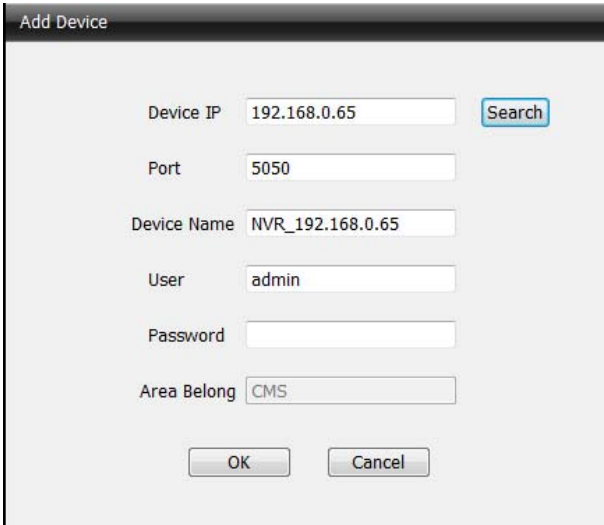
The 'Search Online Device' window displays a table with 14 rows of device information. Each row includes a checkbox, a device serial number, device type, IP address, port, device name, user name, and password. The table is scrollable, and the bottom of the window contains 'Search', 'Select', 'Batch Add', and 'Cancel' buttons.

		Device serial	Device Type	IP	Port	Device Name	User Name	Password
1	<input type="checkbox"/>	01301010613e559b1529	NVR-130-36CH	192.168.0.130	5050	NVR_192.168....	admin	
2	<input type="checkbox"/>	0180101069402df19130	IPC-180-1CH	192.168.0.141	5050	IPC_192.168....	admin	
3	<input type="checkbox"/>	01801010697aadf69130	IPC-180-1CH	192.168.0.142	5050	IPC_192.168....	admin	
4	<input type="checkbox"/>	015510106980bc6cd134	NVR-155-8CH	192.168.0.157	5050	NVR_192.168....	admin	
5	<input type="checkbox"/>	022b101069942411ed34	DVR-228-16CH	192.168.0.161	5050	DVR_192.168....	admin	
6	<input type="checkbox"/>	01301234abc5678IPC00	IPC	192.168.0.186	5050	IPC_192.168....	admin	
7	<input type="checkbox"/>	3988010041307060086	IPC	192.168.0.187	5050	IPC_192.168....	888888	888888
8	<input type="checkbox"/>	013e1010619aa1991529	NVR-13E-4CH	192.168.0.38	5050	NVR_192.168....	admin	
9	<input type="checkbox"/>	01511010617687961529	NVR-151-16CH	192.168.0.65	5050	NVR_192.168....	admin	
10	<input type="checkbox"/>	265288558	IPC	192.168.0.66	5050	IPC_192.168....		
11	<input type="checkbox"/>	01511010692a9b6ad134	NVR-151-20CH	192.168.0.80	5050	NVR_192.168....	admin	
12	<input type="checkbox"/>	02600000000c69004706	IPC-260-1CH	192.168.0.85	5050	IPC_192.168....	admin	
13	<input type="checkbox"/>	02341010615e9cb12925	NVR-234-16CH	192.168.0.86	5050	NVR_192.168....	admin	
14	<input type="checkbox"/>	0264c3684d53a09e7838	IPC-264-1CH	192.168.0.97	5050	IPC_192.168....	admin	

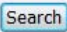

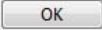
Search: Click  to update the device information

Select: Select one device and click to select, add the device into CMS.

As figure below:



The 'Add Device' dialog box contains input fields for Device IP, Port, Device Name, User, Password, and Area Belong. A 'Search' button is next to the Device IP field. 'OK' and 'Cancel' buttons are at the bottom.

Device IP	192.168.0.65	
Port	5050	
Device Name	NVR_192.168.0.65	
User	admin	
Password		
Area Belong	CMS	
<div></div>		

Batch add: check one or more device simultaneously, click the **Batch add** to add series devices one-time .

Cancel : Close the window

- Sub menu delete node

Right click to select delete node to remove the device(If the device in

the video preview/video record/ video playback, it can not delete)

- Modify the sub menu device name

Right click to select **Update node name** to modify the device name

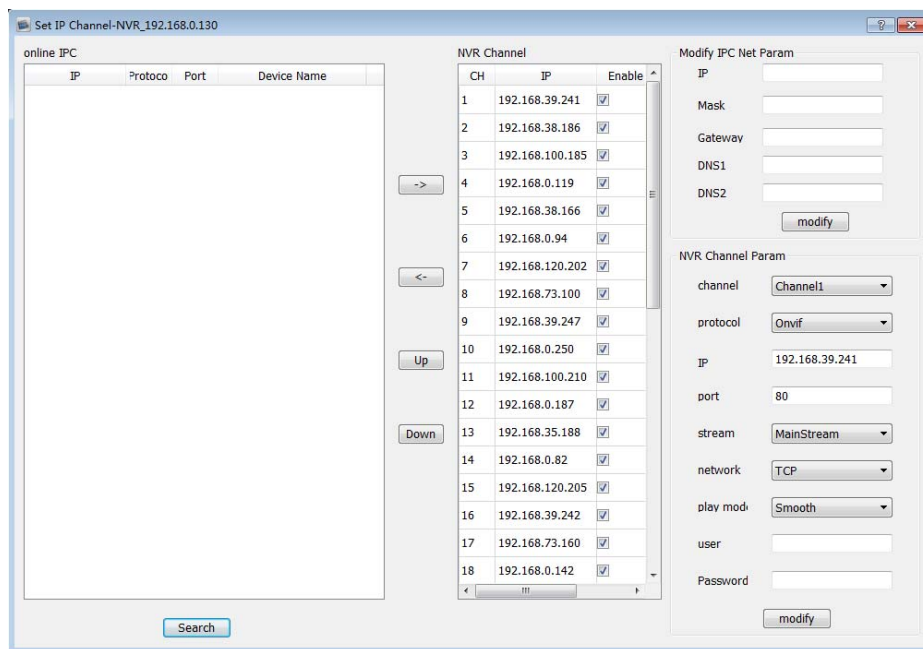
- Refresh channel name



Right click to select to refresh the channel name



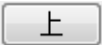
- Set alarm

Right click to open alarm linkage



- Set IP channel



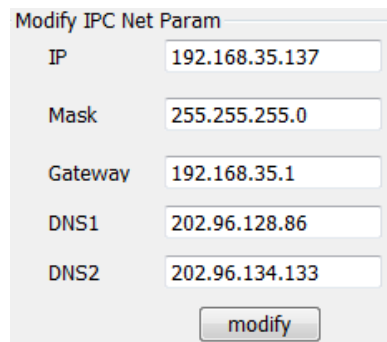
Click  to list the IPC in “online IPC” then select IPC and click , add it to “NVR channel ” successfully.

Select the channel in “NVR channel ”, click  to cancel channel
Select the channel in “NVR channel ”(Notice the device base color, not  behind the device information), click  to move up channel

Select the channel in “NVR channel ”(Notice the device base color,

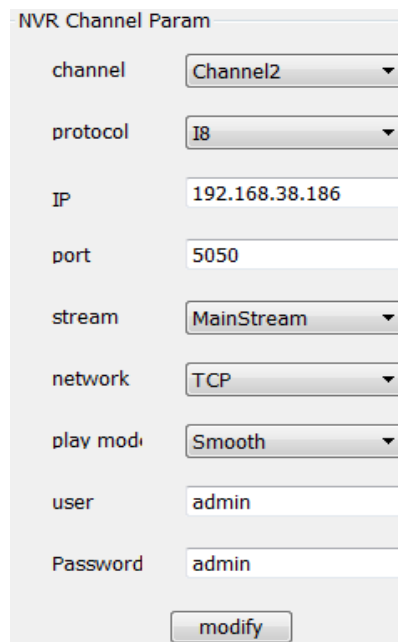
not  behind the device information) , click  to move down channel.

Double-click the device on “online IPC”, users can change IP param and others of IPC in “modify IPC net param” area.



Modify IPC Net Param	
IP	192.168.35.137
Mask	255.255.255.0
Gateway	192.168.35.1
DNS1	202.96.128.86
DNS2	202.96.134.133
<input type="button" value="modify"/>	

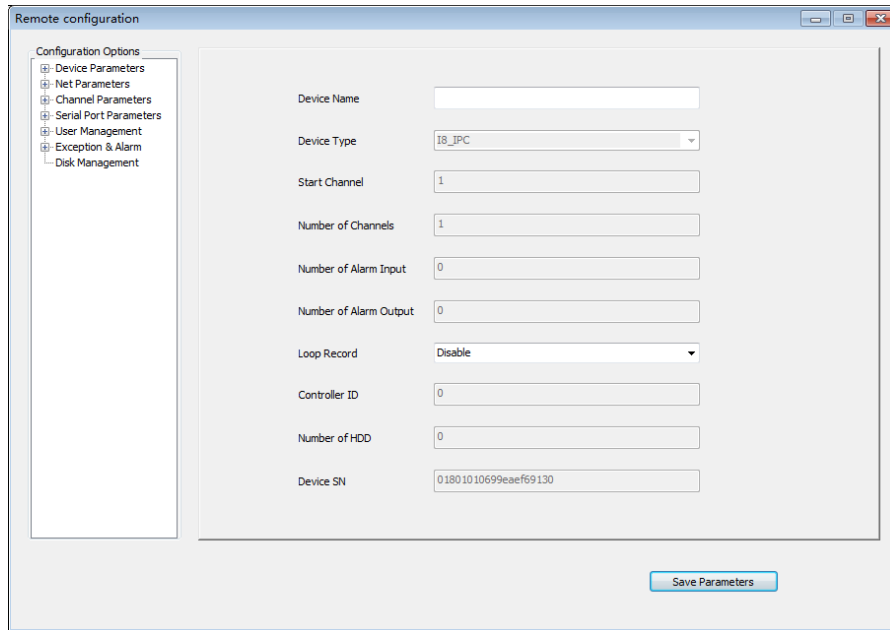
Double-click the channel of “NVR channel” , input the correct param (user name and password) in “NVR channel param” area to ensure NVR can connect IPC.



NVR Channel Param	
channel	Channel2
protocol	I8
IP	192.168.38.186
port	5050
stream	MainStream
network	TCP
play mode	Smooth
user	admin
Password	admin
<input type="button" value="modify"/>	


2.6.1.2 Remote configuration

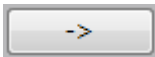
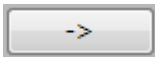
Select the device and click **remote config**:


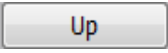
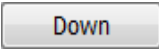


Remote configuration can be used to modified device parameter, more specific operations please refer to device specification manual.

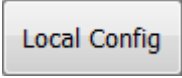
2.6.1.3 Right click to add group node

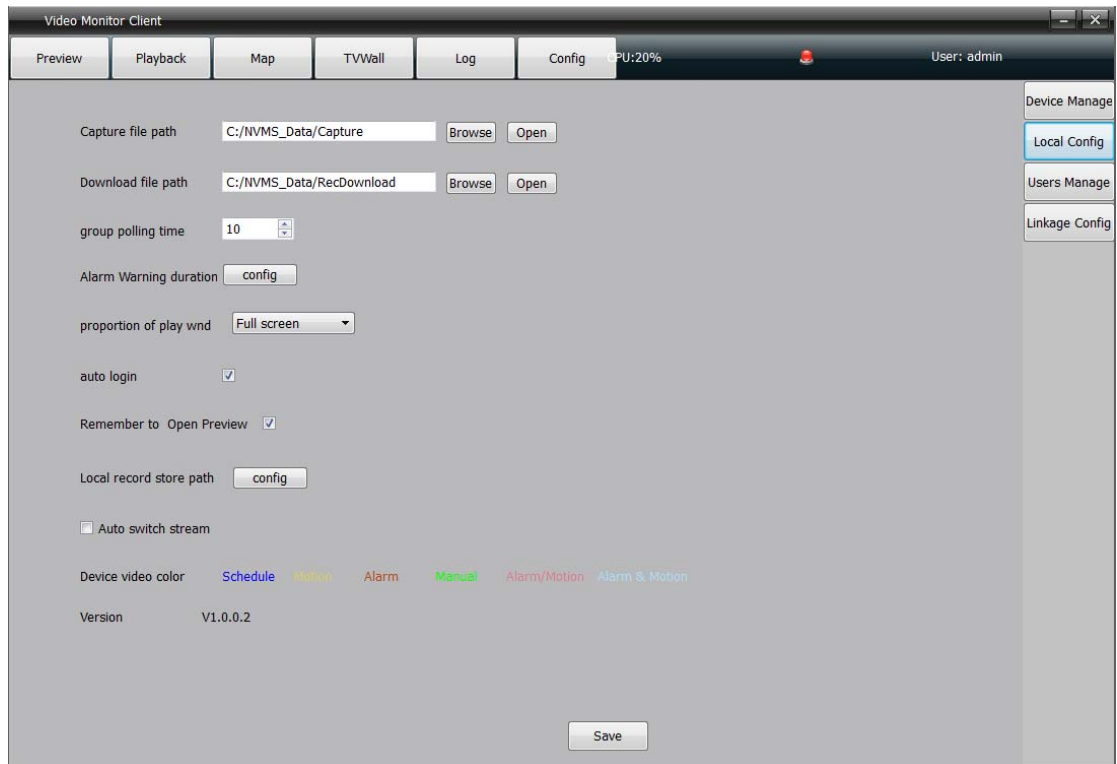
- Right click on  **Channel Group** icon to add group
- Right click on group name to select **Delete group** to delete it

Select the device channel in the left area, and select specified group in the right area, click  then click  to add the channel in the specified group.

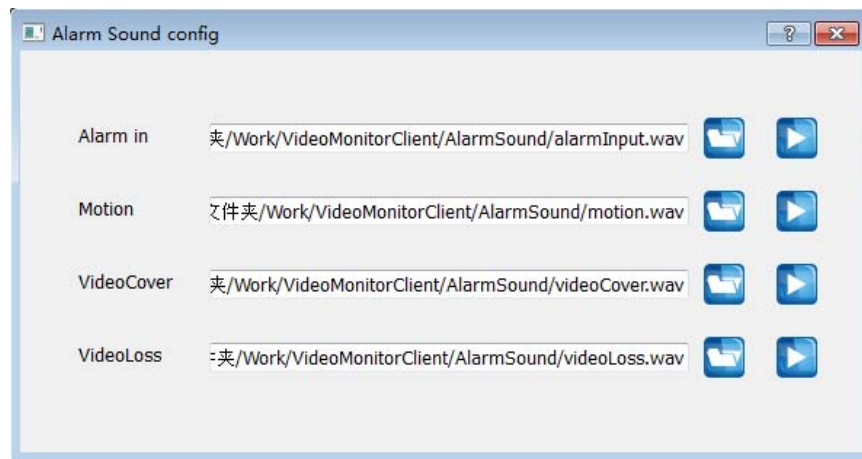
- Select the device information in the right area and click  to remove it
- Select the group and click ,  to sorting it.



2.6.2 local config

Click  enter into the local configuration page. As figure below:



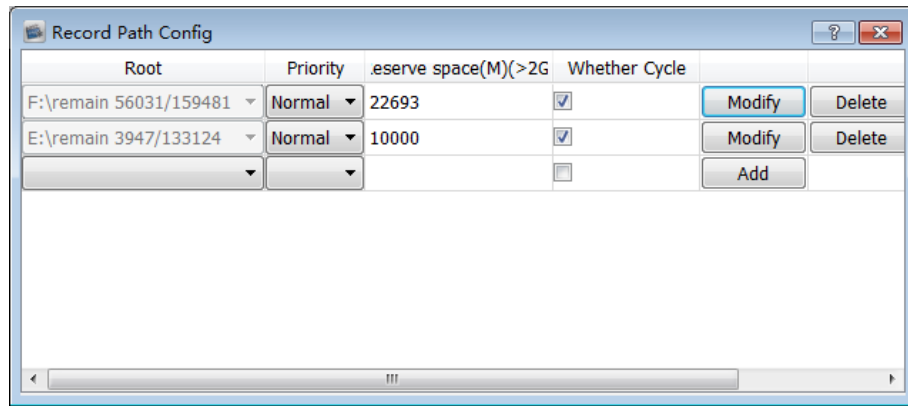
- Capture file path/ Download file path: Set the file store path. Click **Open** to find the file location.
- Group polling time: Set the group preview time 10 seconds in general.
- Alarm sound configuration:



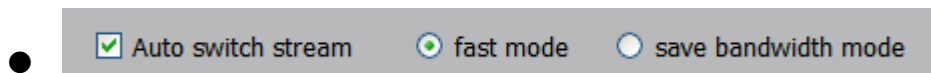
Users can set the custom alarm sound , click  to select the audio file, change the old audio file into the new audio file, click  to preview audio file .

Attention: Only support WAV format audio.

- window display scale: Set the video display scale, users can select 16:9, 4:3 and full screen.
- Remember login: user can log in directly next time after select **Auto login**.
- Remember to open preview: Users can get continuous video preview as who turn off the software directly before, and the record video stored also.
- Local record configuration



Select the saved path of local video, set reserve space and whether cycling the video. It will work after modified the param and click the button of modify.



- Click auto switch stream

Sub stream for above 4 split screen, main stream for 1/4 split screen.

Fast mode: Opened the main stream and sub stream simultaneously in fact, it only change the display chars at every stream switch

Save switch stream: It have to turn off the current stream then turn to another stream, the speed is a little slow then Fast mode

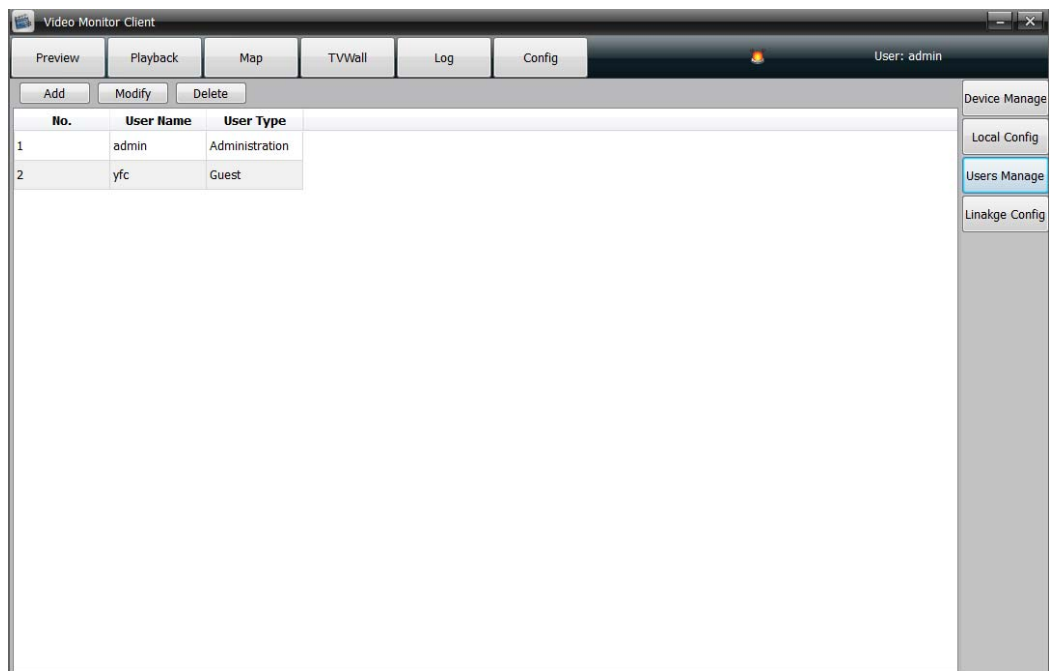
- Non click auto switch stream: Right click on the preview window to select the stream type
- Color for front-end video record type

Different color means different video record type for front-end device.

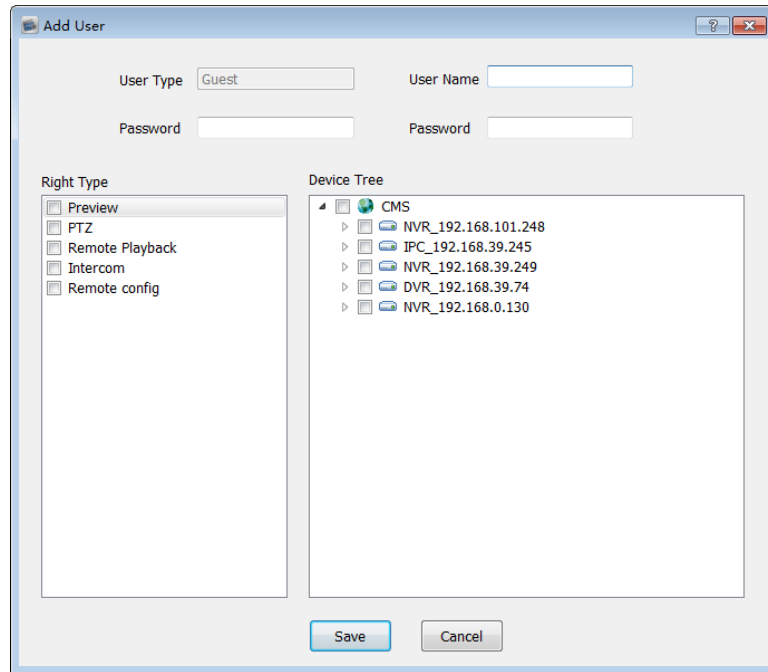
- software version: The current software version.

2.6.3 users manage

Click users manage in configuration module then enter into the users manager page.



Add user: click **Add** to open the add user page:



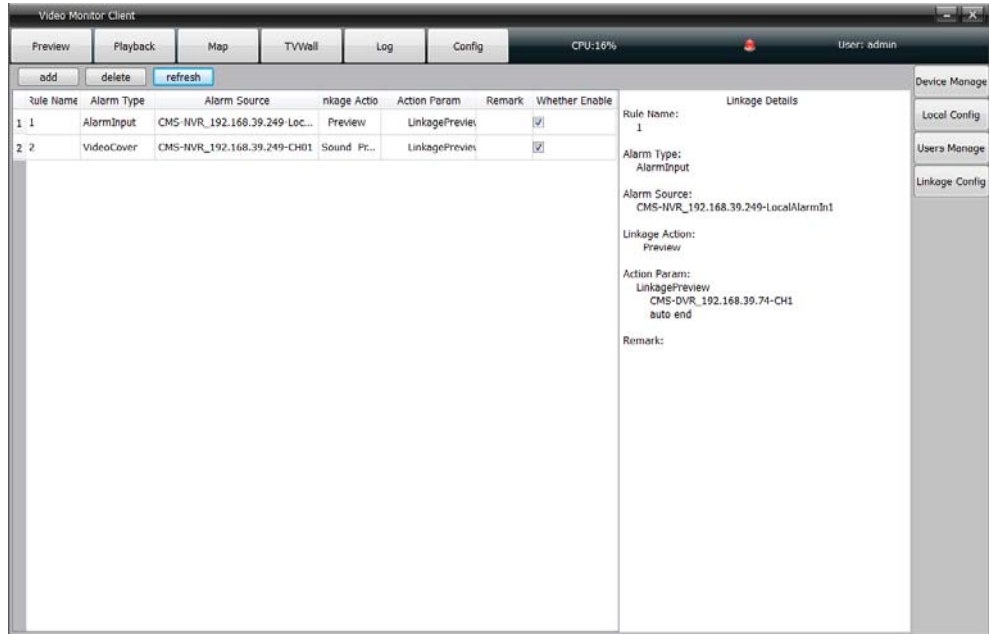
Define user name and password, user authority can be subdivided to single device channel when checking . To note here is: If device has no preview authority, it will not offer other permissions, if the channel has preview authority, it support video record automatically.

User modify: Modify the name, password, permission of ordinary user, superuser (It is the first client , we call it root) allowed to modify password only.

User delete: cancel the ordinary user but super-user.

2.6.4 alarm linkage

Click **Linkage config** to enter the alarm linkage setting page. As figure below:



This is used to configurate alarm linkage information and manage the configured alarm linkage . Click new alarm linkage ,as figure below :

The 'New Alarm Linkage' dialog box contains the following fields and options:

- Rule Name:** A text input field.
- Type:** Radio buttons for 'Alarm Input' (selected), 'Motion Detection', 'Video Cover', and 'Video Lost'.
- Source:** A text input field with a 'Select' button.
- Action:** A section titled 'Linkage Action Choose' with checkboxes for 'Sound', 'Map', 'TV Wall', 'Preview', 'Record', 'Capture', and 'PTZ'.
- Action param:** A large text area for additional parameters.
- Remarks:** A text input field.
- Buttons:** 'Save' and 'Cancel' buttons at the bottom.

Rule name: Rule name (user defined)

Type: Alarm input ,motion detection, video cover, video lost

Source: Select any device channel for alarm linkage

Linkage action: Corresponding actions for alarm signal receiving,

user can select one or more linkage action including :

- sound: Buzzer alarm
- Map: Alarming on the electronic map
- TV wall: Alarming on the TV wall
- Preview: Popp up a preview window
- Record: Alarm triggered video record
- Capture: Alarm triggered capture
- PTZ: Alarm triggered PTZ control

Action param: Display the relevant action information

Remark : Indicate the alarm information(user defined)